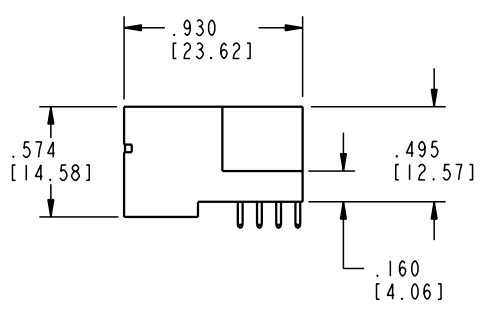
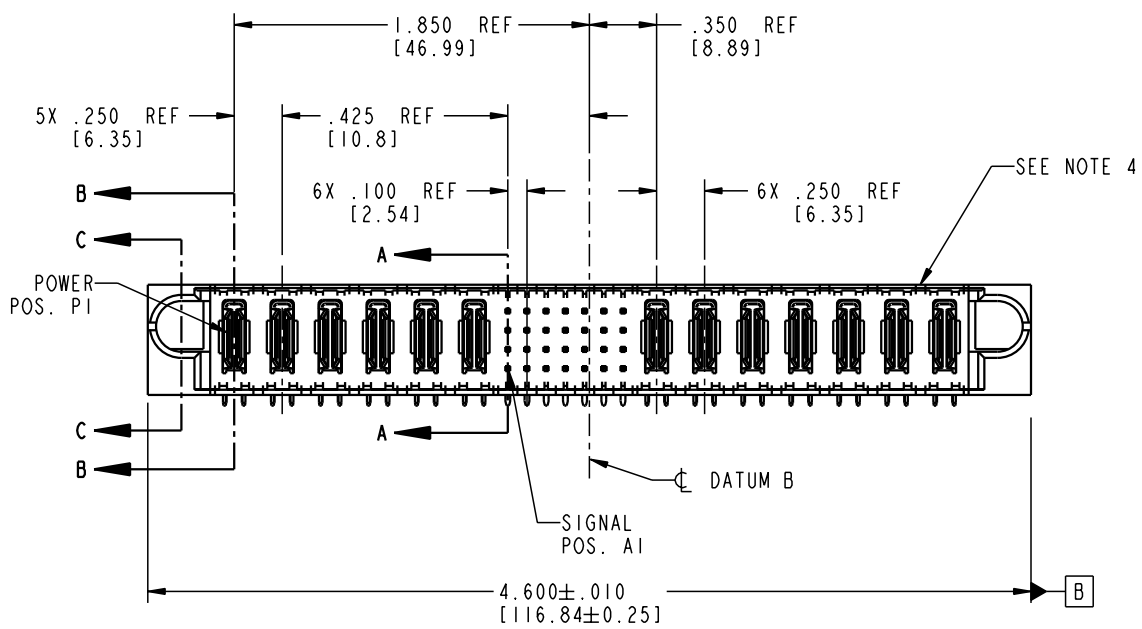
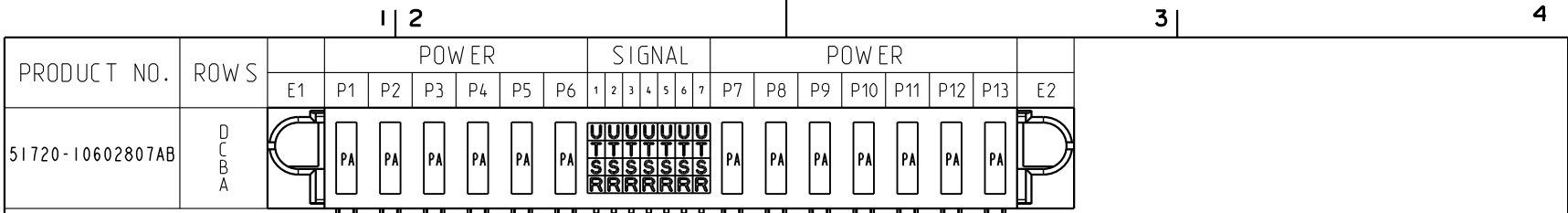


Tous droits strictement réservés. Reproduction ou communication o des tiers interdite sous quelque forme que ce soit sans autorisation écrite du propriétaire. Propriété de c FCI. Droits de reproduction FCI.

All rights strictly reserved. Reproduction or issue to third parties in any form whenever is not permitted without written authority from the proprietor. Property of FCI. Copyright FCI.



CODE	DIM "M" MATING LENGTH	CONTACT TYPE
R	.270 [6.86]	SIGNAL
S	.270 [6.86]	SIGNAL
T	.270 [6.86]	SIGNAL
U	.270 [6.86]	SIGNAL
PA	N/A [N/A]	POWER

mat'l code				SEE NOTE 2		tolerances unless otherwise specified		CUSTOMER		 www.fciconnect.com	
ltr	ecn no.	dr	date	linear	.XX±.01/0.X±0.3		COPY		 title 6P + 28S + 7P RIGHT ANGLE SOLDER HEADER		
A	V21896	CGD	12/18/02		.XXX±.005/0.XX±0.13		projection		product family PwrBlade code 213		
					.XXX±.0020/0.XXX±0.051		 INCH/MM		size dwg no A 51720-10602807AB sheet 1 of 4		
					° ± °		scale 1:1				
sheet index		revision sheet		A	A	A	A			cage code 22526	

A
FCI

B

A

B

1 | 2

3 |

4

1 | 2

Pro/E

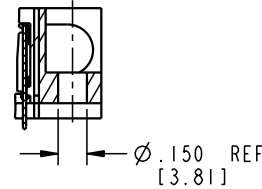
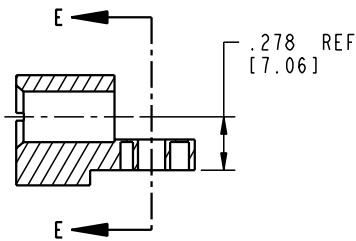
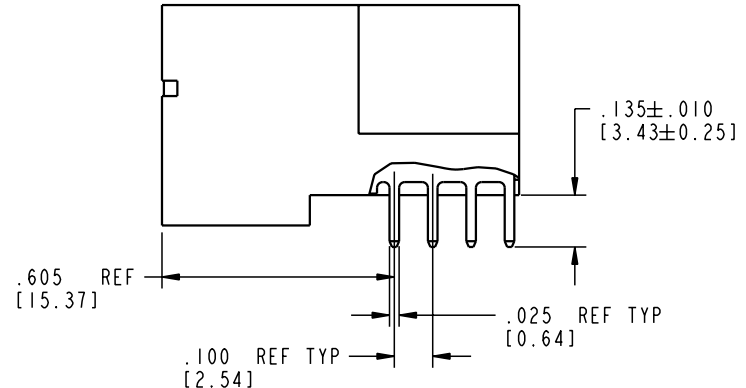
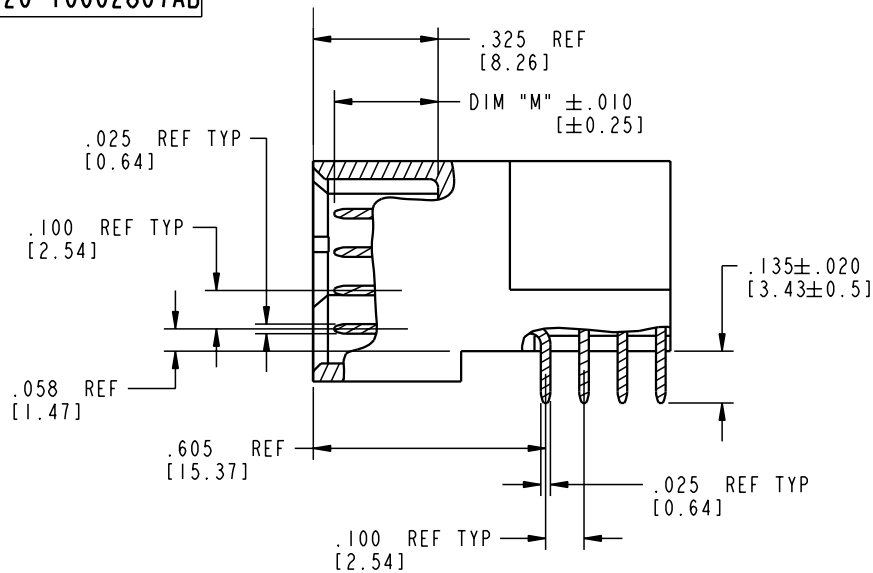
3 |


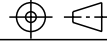
4

Tous droits strictement réservés. Reproduction ou communication o des tiers interdite sous quelque forme que ce soit sans autorisation écrite du propriétaire. Propriete de c FCI. Droits de reproduction FCI.

All rights strictly reserved. Reproduction or issue to third parties in any form, whatever is not permitted without written authority from the proprietor. Property of FCI. Copyright FCI.

PRODUCT NUMBER
51720-10602807AB



mat'l code				SEE NOTE 2		tolerances unless otherwise specified		CUSTOMER		 www.fciconnect.com	
ltr	ecn no.	dr	date	linear	.XX±.01/0.X±0.3		COPY		title		
A					.XXX±.005/0.XX±0.13		projection		6P + 28S + 7P		
					.XXXX±.0020/0.XXX±0.051				RIGHT ANGLE SOLDER HEADER		
					angles	0° ± 2°		INCH/MM		product family	
					dr	C. DAILY	12/18/02	scale		PwrBlade	
				engr	M. MOSTOLLER	12/18/02	1:1		code		
				chr	M. MOSTOLLER	12/18/02			size		
				appd	M. MOSTOLLER	12/18/02			A 51720-10602807AB		
sheet index		revision sheet								sheet 2 of 4	

Pro/E

cage code 22526

PDM: Rev:A

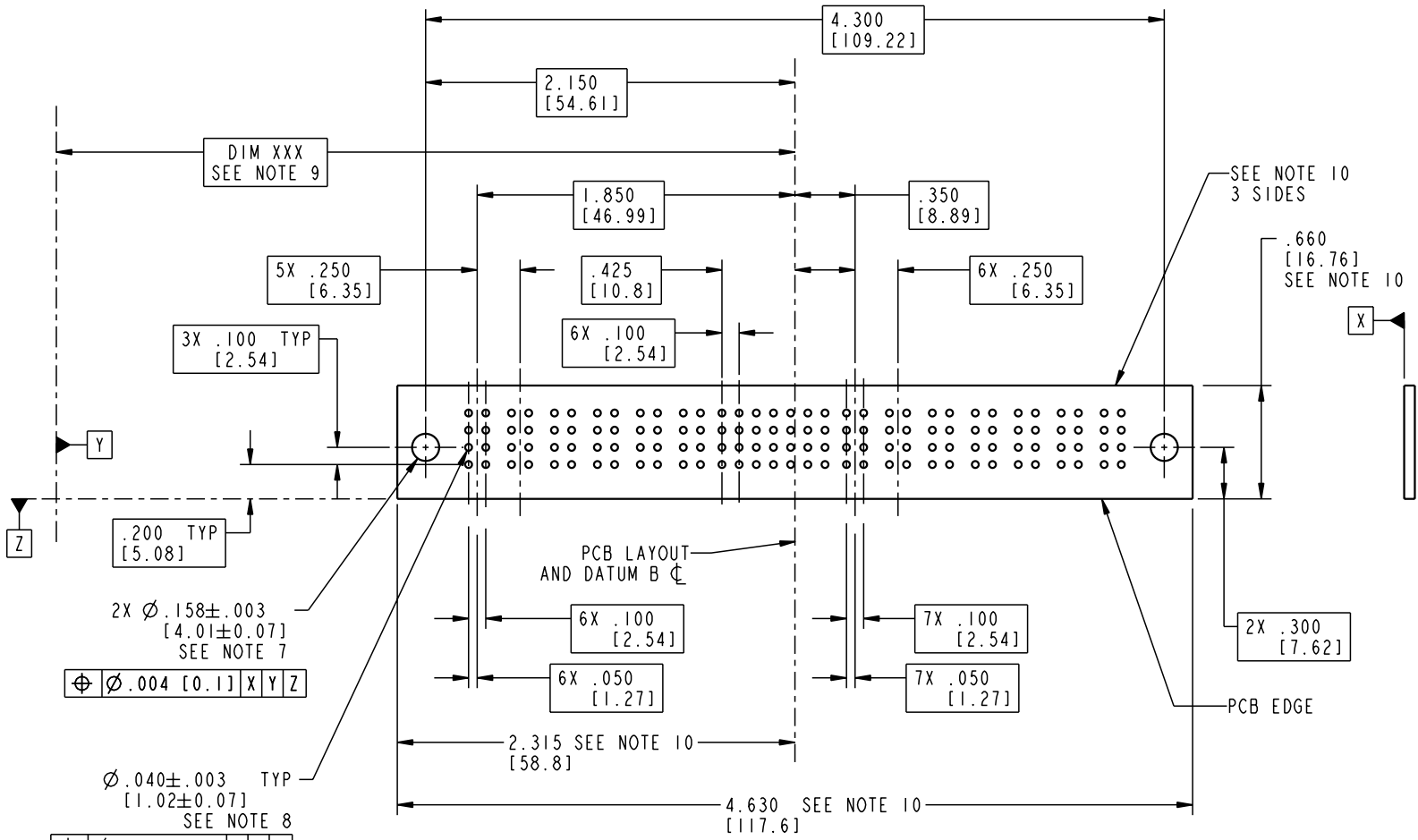
STATUS: Released

Printed: Aug 12, 2007

Tous droits strictement réservés. Reproduction ou communication o des tiers interdite sous quelque forme que ce soit sans autorisation écrite du propriétaire. Propriété de c F.C.I. Droits de reproduction F.C.I.

All rights strictly reserved. Reproduction or issue to third parties in any form whatever is not permitted without written authority from the proprietor. Property of F.C.I. Copyright F.C.I.

PRODUCT NUMBER
51720-10602807AB



2X $\varnothing .158 \pm .003$ [4.01±0.07] SEE NOTE 7
 $\varnothing .040 \pm .003$ TYP [1.02±0.07] SEE NOTE 8

PCB LAYOUT AND DATUM B \varnothing

RECOMMENDED PCB LAYOUT

mat'l code				SEE NOTE 2		tolerances unless otherwise specified		CUSTOMER		 www.fciconnect.com	
ltr	ecr no.	dr	date	linear	.XX±.01/0.X±0.3	projection		COPY		title	
A				angles	.XXX±.005/0.XX±0.13					6P + 28S + 7P	
				dr	.XXX±.0020/0.XXX±0.051					RIGHT ANGLE SOLDER HEADER	
				enr	0° ± 2°	INCH/MM		product family		code	
				chr		scale		PwrBlade		213	
				appd		1:1		size		sheet	
sheet index		revision sheet						A		3 of 4	
								51720-10602807AB			

cage code 22526

Pro/E

Tous droits strictement réservés. Reproduction ou communication o des tiers interdite sous quelque forme que ce soit sans autorisation écrite du propriétaire. Propriete de c FCI. Droits de reproduction FCI.



All rights strictly reserved. Reproduction or issue to third parties in any form, whatever is not permitted without written authority from the proprietor. Property of FCI. Copyright FCI.

PRODUCT NUMBER
51720-10602807AB

NOTES:

1. DIMENSIONS AND TOLERANCES ARE IN ACCORDANCE WITH ASME Y14.5M, 1994 UNLESS OTHERWISE SPECIFIED.

CONNECTOR NOTES:

- 2. HOUSING MATERIAL: UL 94 V-0 GLASS FILLED
HIGH-TEMP THERMOPLASTIC
POWER CONTACT MATERIAL: COPPER ALLOY
SIGNAL PIN MATERIAL: COPPER ALLOY
- 3. PLATING:
SIGNAL PINS: 30u"/0.76um Au OVER 50u"/1.27um Ni
POWER CONTACTS: 50u"/1.27um Ni UNDER ALL
WITH 30u"/0.76um Au ON CONTACT AREA
AND SnPb ON PCB INTERFACE

4. MANUFACTURER'S NAME, P/N, AND DATE CODE TO APPEAR ON THIS SURFACE.

5. PRODUCT SPECIFICATION GS-12-149.
APPLICATION SPECIFICATION BUS-20-067.

PCB NOTES:

- 6. ALL HOLE DIAMETERS ARE FINISHED HOLE SIZE.
- 7. MOUNTING HOLES, WHERE APPLICABLE, ARE UNPLATED.
- 8. $\varnothing .0453 \pm .0010$ [1.151 \pm 0.025] DRILLED HOLES PLATED WITH
.0003 [0.008] MIN SnPb OVER .001 [0.03]
TO .003 [0.08] Cu PLATING TO ACHIEVE
 $\varnothing .040 \pm .003$ [1.02 \pm .07] HOLE.
- 9. "DIM XXX" TO BE DETERMINED BY THE CUSTOMER.
- 10. CONNECTOR KEEP-OUT ZONE.

mat'l code		SEE NOTE 2		tolerances unless otherwise specified		CUSTOMER		www.fciconnect.com	
ltr	ecn no.	dr	date	linear	.XX±.01/0.X±0.3	COPY			
A				projection	.XXX±.005/0.XX±0.13			title 6P + 28S + 7P	
				angles	.XXX±.0020/0.XXX±0.051			RIGHT ANGLE SOLDER HEADER	
				dr	C. DAILY 12/18/02	INCH/MM		product family PwrBlade code	
				enr	M. MOSTOLLER 12/18/02	scale		size 213	
				chr	M. MOSTOLLER 12/18/02	1:1		sheet 4 of 4	
				appd	M. MOSTOLLER 12/18/02			A 51720-10602807AB	
sheet index	revision sheet								

1 | 2

Pro/E

3 |

cage code 22526

4

PDM: Rev:A

STATUS: Released

Printed: Aug 12, 2007